



Krech Science News

Welcome to Simonsen!

Welcome to your first year of high school! You will enjoy the increased activities and freedoms associated with high school. You will also become aware that your attitude and study habits are crucial to your success in high school.



Materials Needed:

1. Pencil, Pen, Lined Paper, Eraser, Ruler
2. 2" 3-Ring Notebook
3. At least 5 dividers.
4. Highlighter and Colored Pencils
5. Calculator



NOTE: There is a class set of Scientific Calculators that can be used during class.

Mrs. Krech Has a Website!

<http://www.scienceteachingideas.com/Krech.htm>



Visit often for Homework Assignments, Project Updates, Announcements, and TONS OF BONUS WORK!

About Your Teacher



Mrs. Marcia Krech has been teaching Science in Jefferson City High School for the past 21 years. She lives in Jefferson City with her husband, Warren, the popular morning radio talk show host on KLIK. Her son, Ben, works as a Production Director for XM Satellite Radio in Washington, D.C. Her daughter, Sarah, works for an insurance company in St. Louis. Mrs. Krech sponsors the Simonsen Backstage Crew.

You may contact Mrs. Krech at <marcia.krech@jcps.k12.mo.us> or call 659-3298 for information on your student's academic progress. Her Planning Period is First Block.

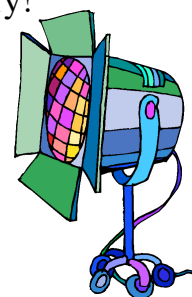


Classroom Rules:

1. Be in class on time.
2. Do not use vulgar language.
3. Keep your hands to yourself.
4. Respect the property of others.
5. No personal grooming in class.

Simonsen Backstage Crew

Mrs. Krech encourages all students who are interested in being part of the Backstage Crew to contact her. You may join any time! No experience necessary!





Page Two Science News

Friday Quizzes:

Every Friday you will have a Quiz over the material from that week. These quizzes add up to a sizeable test score by the end of the grading term.

Be sure you are prepared each Friday!

Notebook Tests:

Keep your notebook organized! There will be a major notebook test after every unit of study. If you stay organized, you will get a good grade on your notebook test.

Homework & Grades:

1. You should expect Science Homework three or more nights per week.



2. Your **Term Grades** are based on:

50% Evaluations
.....such as quizzes, tests, projects, some major lab write-ups.

and

50% Daily Work
.....such as group work, homework, class work, some lab write-ups.

3. **Grading Scale:**

- A 90-100%
- B 82-89%
- C 73-81%
- D 66-72%

Earth Science Curriculum:

We study all four branches of Earth Science and the Scientific Method:

SCIENTIFIC METHOD: You will design, conduct, analyze, and report on experiments. This is an ongoing unit and included in all the branches.

ASTRONOMY: What do we know about the Universe today? What technology do we use to acquire new information?

GEOLOGY: We will relate mineralogy, volcanology, seismology, hydrology, plate tectonics, and geologic history to the state of Missouri.

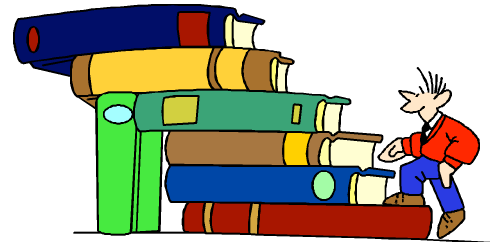
METEOROLOGY: How are weather and climate related? Are human beings changing the Earth's climate? How does weather affect life on Earth?

OCEANOGRAPHY: How do the oceans of the world affect the different climates on Earth?



Attendance is Important!

Try as hard as you can to be in class every day! If you are absent, it is important that you catch up your work quickly. Check Mrs. Krech's website while you are home to see what you are missing. When you return: check the **MAKE-UP FOLDER** to pick up your make up work. Check with Mrs. Krech to see if there are any labs or tests you need to make up before or after school.



Safety in the Lab:

The science classroom is a laboratory. Only **SAFE** behavior is allowed! Safety violations will be issued for inappropriate and dangerous behavior and can result in the loss of lab privileges.

Late Coupons

All homework is due on time. You will be issued one late coupon per term. Use these carefully because when they are gone, they are gone! They will be worth 5 BONUS POINTS at the end of a term if not used.

