

Climate Change PowerPoint FollowSheet

Cut out all the boxes. Take another piece of paper and fold it in half hot-dog-bun style. Glue the Title Box at the top of the page. Glue the Boxes with Roman Numerals at the top of each of the four columns you made when you folded the paper. While you watch the Climate Change PowerPoint, glue the rest of the boxes in the correct columns.

Climate Change PowerPoint FollowSheet

I. The Earth's Climate has changed many times, due to natural causes.

II. What Are Some Natural Causes of Climate Change?

III. Has the World's Climate Changed in the Last 100 Years?

IV. Have Humans Caused Some of the Recent Climate Changes?

C. Volcanic Emissions



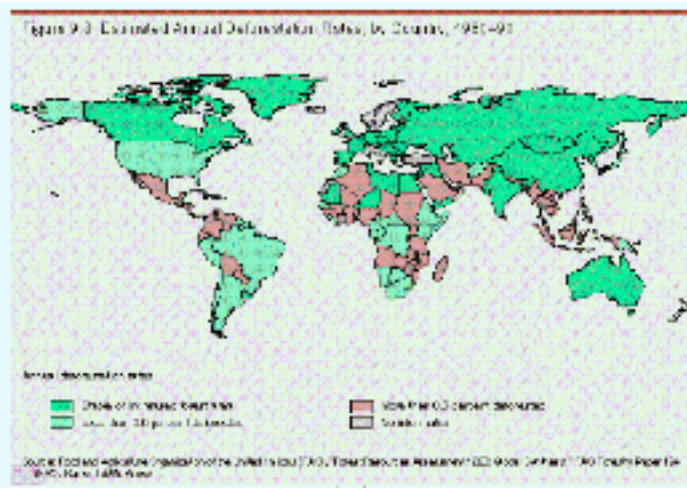
B. Changes in the amount of energy coming from the Sun



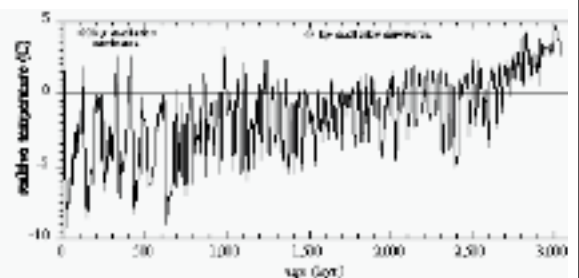
EVIDENCE OF GLOBAL TEMPERATURE INCREASES SINCE 1900:

- (A) Recorded temperature changes
- (B) The observed rise in sea level of 4-8 inches
- (C) The shrinkage of mountain glaciers
- (D) Reduction of Northern Hemisphere snow cover
- (E) Increasing sub-surface ground temperatures

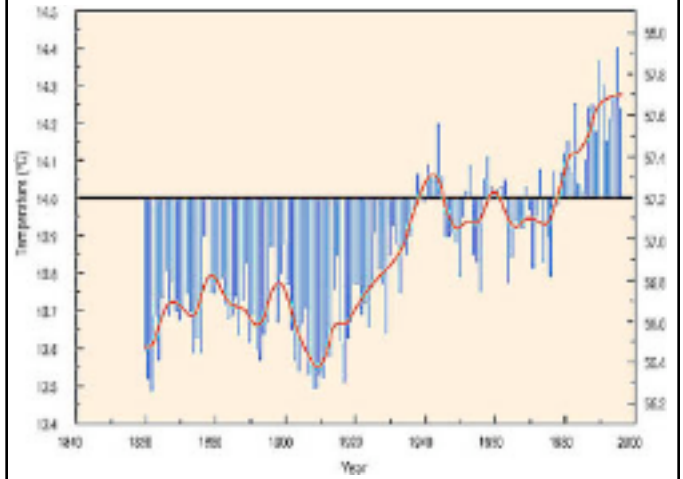
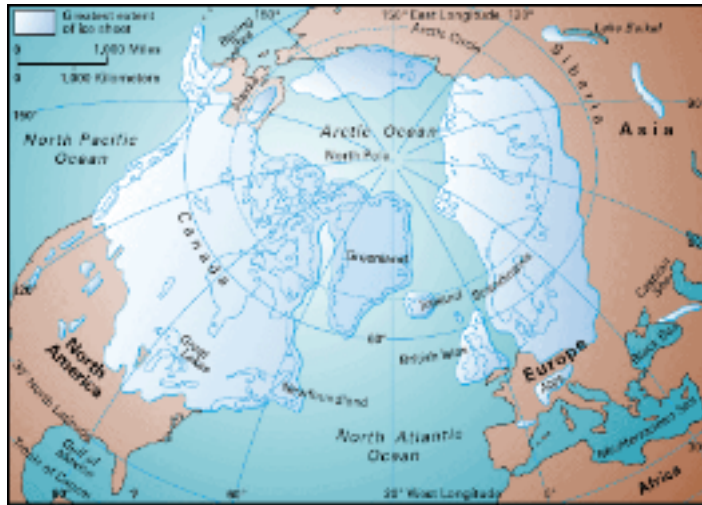
B. Global Deforestation



A. **There have been at least 4 Ice Ages in the last 3 million years - with only a 5°C cooler difference!



B. Four major continental glaciations are recorded in North America. The last began about 70,000 years ago, and ended 10,000 years ago. The ice moved as far south as Missouri.



ANSWER: YES.

- (1) The average surface temperature has increased by about 1°F.
- (2) Snow and ice cover have decreased.
- (3) The sea level has risen by 4-8".

A. Variations in the Earth's Orbit (tilt or shape) - cycles from 20,000 to 100,000 yrs.



ANSWER: POSSIBLY.

D. Collisions with comets or meteorites



SOME HUMAN ACTIVITIES MIGHT BE:

A. Burning of fossil fuels (coal, oil, and natural gases)

